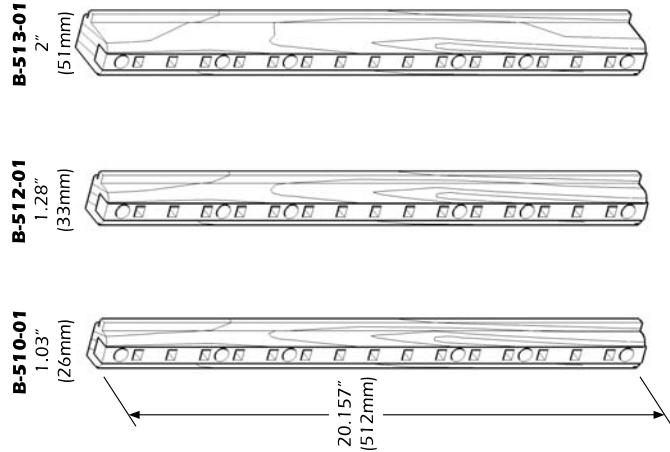


Installation Instructions
 Instrucciones de Instalación
 Instructions d'installation
 Einbauanweisungen



Clear Coated Maple with Beige Insert
 Madera con recubierta transparente y secciones en beige
 Érable vernis avec encart beige
 Ahorn mit Einsatz in beige



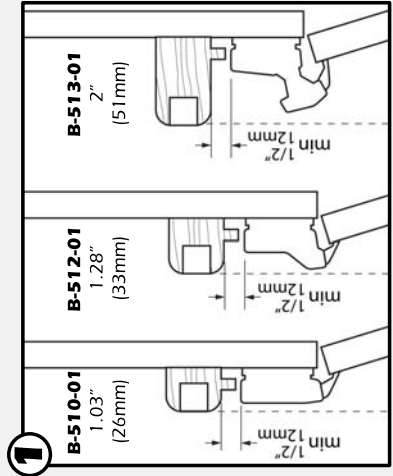
www.quiktray.com
 www.tenntex.com



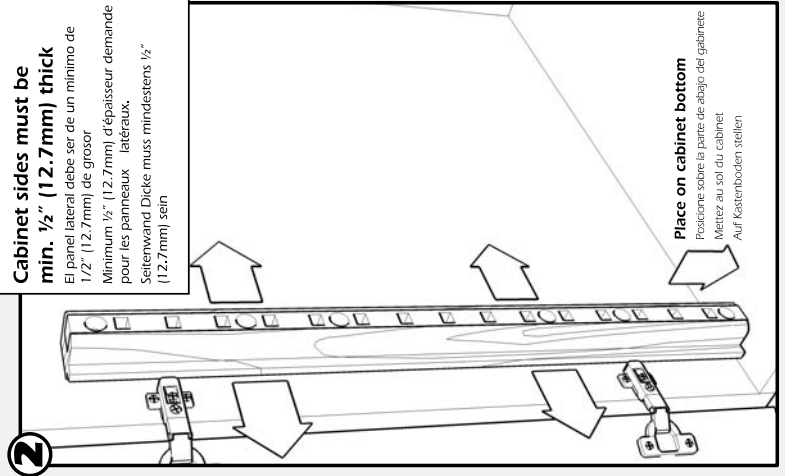
Made in USA

INS-030

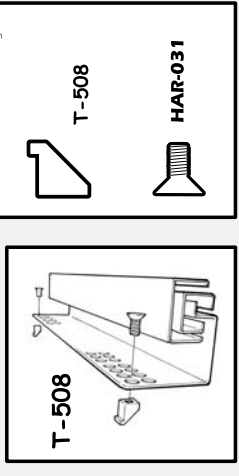
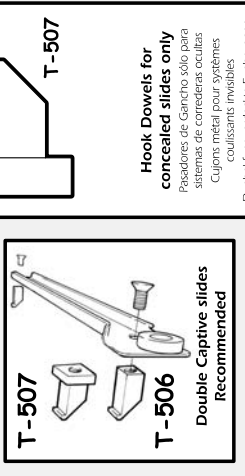
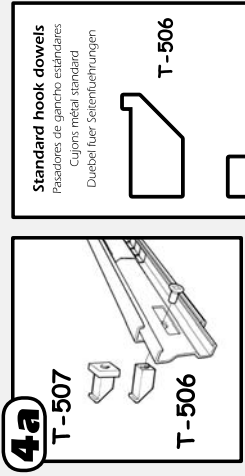
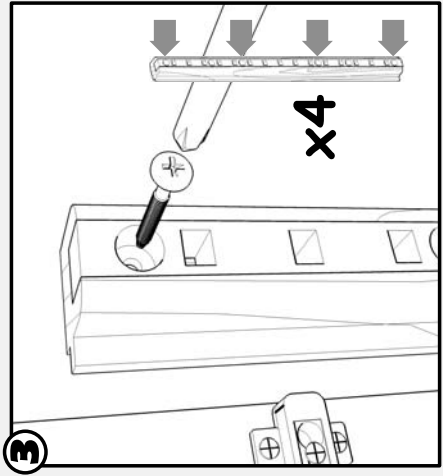
FRAMELESS



Cabinet sides must be min. 1/2" (12.7mm) thick
 El panel lateral debe ser de un mínimo de 1/2" (12.7mm) de grosor.
 Minimum 1/2" (12.7mm) d'épaisseur demandée pour les panneaux latéraux.
 Seitenwand Dicke muss mindestens 1/2" (12.7mm) sein



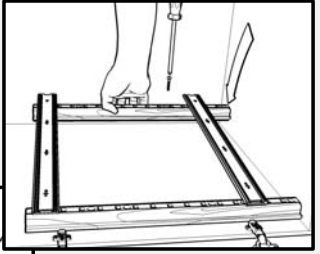
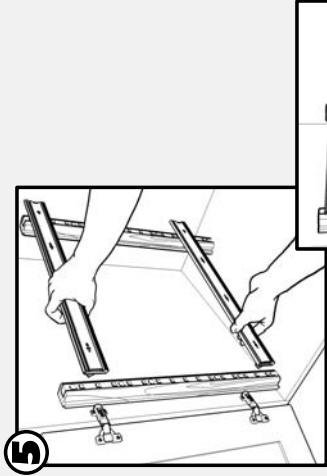
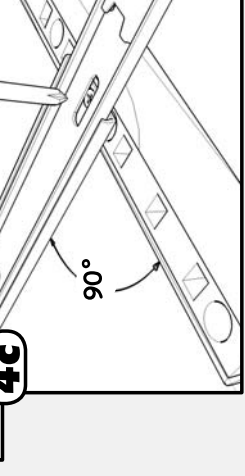
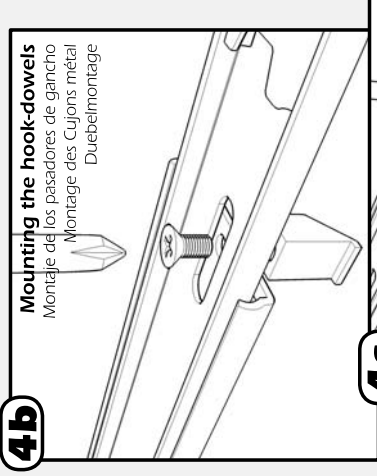
Place on cabinet bottom
 Posicione sobre la parte de abajo del gabinete.
 Metter au sol du cabinet.
 Auf Kastenboden stellen



Standard hook dowels
 Pasadores de gancho estándares
 Cujons métal standard
 Dübel für Standardmontagen

Hook Dowels for concealed slides only
 Pasadores de Gancho sólo para sistemas de correderas ocultas
 Cujons métal pour systèmes coulissants invisibles
 Dübel für verdeckte Führungen

T-506 T-507 T-508 HAR-031

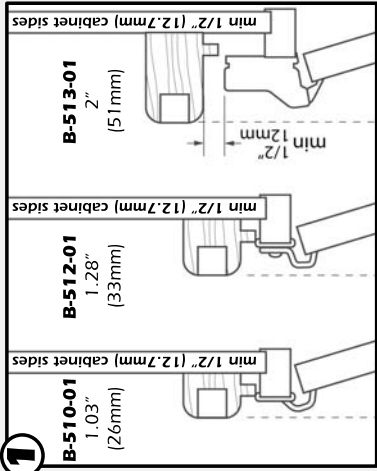


4b

4c

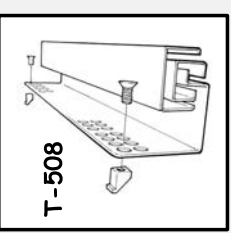
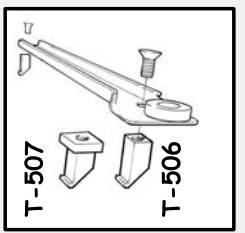
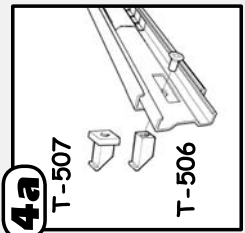
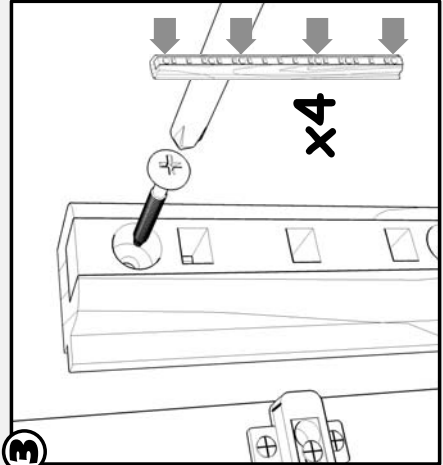
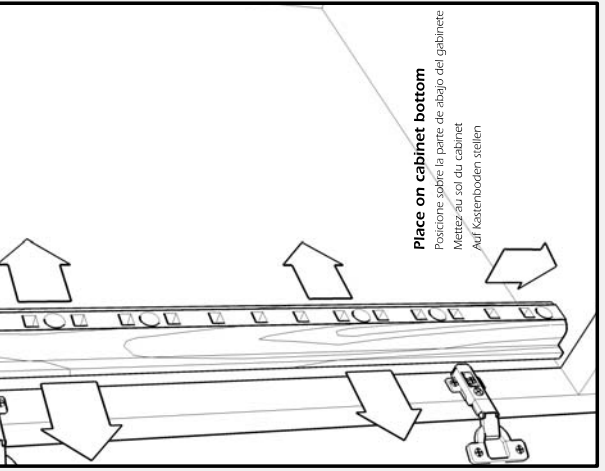
5

FACE FRAME



2

Cabinet sides must be min. 1/2" (12.7mm) thick
El panel lateral debe ser de un mínimo de 1/2" (12.7mm) de grosor.
Minimum 1/2" (12.7mm) d'épaisseur demande pour les panneaux latéraux.
Seitenwand Dicke muss mindestens 1/2" (12.7mm) sein



Standard hook dowels
Pasadores de gancho estándares
Cujons métal standard
Dübel für Selenierungen

T-506

T-507

Hook Dowels for concealed slides only
Pasadores de gancho sólo para sistemas de correderas ocultas
Cujons métal pour systèmes coulissants invisibles
Dübel für verdeckte Führungen

T-508

HAR-031

