

Kitchen Islands



Hardware Resources may at its own discretion and without notice change the specifications, color, or design of any product in our catalog as well as discontinue any product in our range.
Measurements shown in this catalog have a tolerance of +/- 1/8".

Kitchen Islands Contents

Jeffrey Alexander

ISL13 Conversation Island.....	628-629
ISL07 Contemporary Island.....	630-631
ISL02 Entertaining Island.....	632-633
ISL01 Tuscan Island.....	634-635
ISL12 Loft Island.....	636-637
ISL09 & ISL10 Bungalow & Bungalow Petite Island.....	638-639
ISL04R & ISL04 Round Petite & Petite Island.....	640-641
ISL06 Acanthus Island.....	642
ISL05 Milanese Island.....	643

Elements

ISL501 Cart Island.....	644
ISL500 Cart Island.....	645



Hardware Resources believes in quality, integrity, and reliability. We uphold the highest standards of service and responsibility in the industry.

As such, Hardware Resources warrants all Bath Vanities and Kitchen Islands and their components to be free from any defects in material and workmanship as long as the original consumer purchaser owns the products.

If a defect is found, Hardware Resources will send to the original purchaser a new replacement product or component at no charge. If a replacement is no longer available, Hardware Resources will offer a replacement vanity, island or component that is comparable to the original product's purchased price or will refund to the original purchaser the current wholesale value of the vanity or component.

This warranty is a warranty of replacement only. Hardware Resources specifically does not warrant removal of the product nor installation of replacement new product. This warranty does not apply when the item has been tampered with, misused, improperly installed, altered from the original design, or damaged through abuse or accident. Finishes for all Bath Vanities and Kitchen Islands are multi-layered, created by hand. Slight variations may occur which add to the uniqueness of each item. Granite and marble countertops are manufactured of natural stone, and as a result, Hardware Resources cannot guarantee exact shading or grain of the stone. Butcher Block tops are manufactured of natural wood, and Hardware Resources cannot guarantee exact shading or grain of the wood. Naturally occurring characteristics such as variations in grain, color, and/or mineral streaks are not considered a defect in the product.

In the unlikely event that a defective vanity, island or component is encountered, please contact Customer Service at 800.463.0660. Please be able to provide a brief description and photographs of the defect.

Island Base Care

Before using a cleaner, read the directions on the cleaner bottle to find out whether the cleaner is safe for wood, as well as whether you should put the cleaner straight on the item or if it needs to be diluted with water. Use a clean, dry cloth to wipe off the surface of your kitchen island before applying a cleaner; this will get rid of hair, dust and other loose materials before you apply the cleaner. Use a cloth or soft sponge while cleaning the island to not scratch the finish. After you have applied the cleaner, be sure you rinse off your island and dry the surface with a dry towel.

Butcher Block Top Care

All Butcher Block products must be oiled on all surfaces with a natural mineral oil at least once a month to protect the wood. Periodically (once every several weeks), depending upon use and household conditions, apply a heavy coat of mineral oil to the work surface of your top.

Cleaning your Butcher Block Top:

1. Brush or scrape all loose particles from the surfaces.
2. Take a dishcloth and dip in warm mild soapy water and wash top the same as any other wood surface.
3. Wash out dishcloth in clear warm water, wring out, and go over surface again.
4. Dry all surfaces thoroughly.
5. Monthly application of mineral oil is recommended.

If any method, other than the one outlined above, is used in cleaning this top, very serious damage may result.

DO NOT:

1. Wash knives and forks or other utensils on the work surface of your top.
2. Wash your top with harsh detergents of any type.
3. Place counter tops near excessive heat (such as stove) without proper insulation between heat source and the edge of the counter top.
4. Place hot pots/pans/dishware directly on the butcher block surface.
5. Cut off ends, drill holes, make cutouts or otherwise deface tops without refinishing exposed unfinished wood.

Other Considerations:

Extremes of humidity and dryness can swell and shrink hard maple enough to cause small seasonal cracks to appear, usually at the ends of tops or at the end of a lamination. This possibility, though remote, is an unavoidable condition of enjoying the character and beauty of Hard Maple Butcher Block. You can help preserve your top by keeping your home humidified in the winter and by refreshing your top often with oil.

Add a stylish & functional island to your kitchen project!

More workspace | More storage | More function

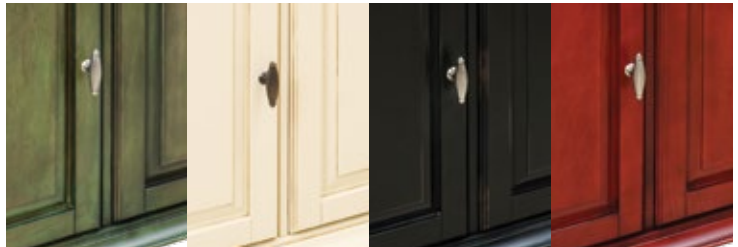
Installs easily in an existing kitchen

Multiple sizes of islands to choose from. Complements existing kitchen cabinets. No wiring or plumbing required; place island directly on existing flooring or carpet.



Rich finishes

Multi-layer hand finishing process creates colors designed to coordinate and contrast with popular kitchen cabinet finishes.



Food-grade butcher block top on Jeffrey Alexander islands

Edge grain tops made in the USA using FDA approved food-safe materials providing a safe work surface for food preparation. End grain imported tops use the same food-safe materials



Options for tops

Butcher block or wood tops are available for all islands. Most islands can be purchased without tops, so that a custom granite or marble top can be added.



Solid furniture-style construction

High quality wood materials and furniture-style construction. All materials used in Jeffrey Alexander islands meet the strict CARB2 certifications.

Full extension slides

Each island features upgraded slides. Full extension slides bring the drawer all the way out. Soft-close motion quietly self-closes the drawers on most models. Hidden undermount slides provide a clean look to drawers.

Dovetail drawer boxes on Jeffrey Alexander Islands

1/2" thick solid hardwood material and dovetail joints make a box strong enough to hold anything from dish towels to small kitchen appliances. Drawer box and slides have a 100lb dynamic load rating.

Increased storage

Deep drawers and tall cabinets are designed to house all types of kitchen accessories and cookware. Greatly increase your counter top workspace and storage in an elegant furniture piece.

Hardware from our Jeffrey Alexander & Elements Collections

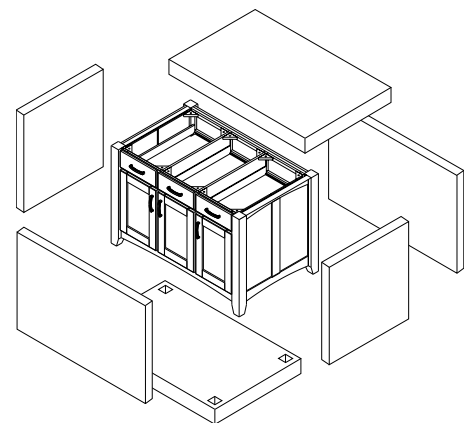
For a unified look, upgrade the kitchen cabinets using the same pulls and knobs as the island.

Upgraded packaging

Extra padding helps protect against damage in shipment.

Limited Lifetime Warranty

Lifetime warranty for defects in materials and craftsmanship for the original purchaser.





Espresso
standard unit



Grey
standard unit



Espresso
with ISL13-DOOR-ESP



Grey
with ISL13-DOOR-GRY

Conversation Island with Seating

This furniture style island is manufactured using the highest quality furniture grade hardwoods and MDF. This slab front island features two working drawers, removable center wine rack and adjustable open shelves on one side and seating space on the other. The deep drawers are dovetailed solid hardwood and are mounted on full extension undermount soft-close slides. Available in Espresso or Grey finish.

- » The included decorative hardware can be found in the Jeffrey Alexander Merrick Collection (item # 549-128)
- » Finishes are applied by hand
- » All materials used meet California CARB2 requirements

Island without stools:

ISL13-ESP (Espresso)

ISL13-GRY (Grey)

- » Island base only
- » 45" L x 30" W x 34 1/4" H



without top

Island with stools:

ISL13-ESP-ST (Espresso)

ISL13-GRY-ST (Grey)

- » Island base with 2 matching stools
- » 45" L x 30" W x 34 1/4" H (island base)
- » 17 1/2" L x 11 3/4" W x 23 3/4" H (stool)



reverse side
with stools

Door kit (optional):

ISL13-DOOR-ESP (Espresso)

ISL13-DOOR-GRY (Grey)

- » 2 finished doors to enclose open shelf storage
- » Includes doors, soft close hinges, plates, pulls, installation screws and templates

ISL13-TOP

- » 1 3/4" hard maple edge grain butcher block
- » Food safe glues & finishing materials
- » 48" L x 32" W
- » Made in the USA

Stools not sold separately



with optional
ISL13-DOOR-GRY



reverse side
without stools



Black

630

hardware
resources™

800.463.0660
www.HardwareResources.com

Contemporary Island

This furniture style island is manufactured using the highest quality furniture grade hardwoods and MDF. The island features three working drawers and cabinet storage on both sides and fully adjustable open shelves on one side. Cabinet doors feature modern textured clear glass inserts. The drawers are dovetailed solid hardwood and are mounted on full extension soft-close undermount slides. Available in Black.

- » The included decorative hardware can be found in the Jeffrey Alexander Delgado collection (item # 519-128)
- » Coordinating posts are available from Hardware Resources (item # P32)
- » Finishes are applied by hand
- » All materials used meet California CARB2 requirements

ISL07-BLK (Black)

- » Island base only
- » 52 1/2" L x 32 1/2" W x 35 1/2" H

ISL01-TOP

- » 1 3/4" hard maple edge grain butcher block
- » Food safe glues & finishing materials
- » 54" L x 34" W
- » Made in the USA



reverse side



without top





Antique White



Distressed Black

Entertaining Island

This furniture style island is manufactured using the highest quality furniture grade hardwoods and MDF. The island features fixed shelves with three removable wine racks on one side, four working drawers and cabinet with adjustable shelf on the reverse side, with fully adjustable shelves on both ends. Additional wine racks sold separately. The drawers are dovetailed solid hardwood and are mounted on full extension soft-close undermount slides. Available in Antique White or Distressed Black.

- » The included decorative hardware can be found in the Jeffrey Alexander Lyon collection (item # 3991)
- » Coordinating posts are available from Hardware Resources (item # P6)
- » Finishes are applied by hand
- » All materials used meet California CARB2 requirements
- » Additional wine racks available

ISL02-AWH (Antique White)

ISL02-DBK (Distressed Black)

- » Island base only
- » 53 1/2" L x 33 1/2" W x 34 1/4" H

Additional wine racks (optional):

ISL02-AWH-WR (Antique White)

ISL02-DBK-WR (Distressed Black)

- » 18-1/2" x 14-1/2" x 9-1/8"
- » Holds 8 bottles

ISL01-TOP

- » 1 3/4" hard maple edge grain butcher block
- » Food safe glues & finishing materials
- » 54" L x 34" W
- » Made in the USA



without top



reverse side



Standard unit with
3 included wine racks



Standard unit with
wine racks removed



Aqua Green



Antique White



Distressed Black



Brilliant Red

Tuscan Island

This furniture style island is manufactured using the highest quality furniture grade hardwoods and MDF. The island features fully adjustable display shelves on one side and three working drawers and cabinets on reverse. Cabinets have one adjustable shelf. The drawers are dovetailed solid hardwood and are mounted on full extension ball bearing slides. Available in four finishes.

- » The included decorative hardware can be found in the Jeffrey Alexander Glenmore Collection (item # 618, 718)
- » Coordinating wood posts can be found in the Hardware Resources collection (item # P13)
- » Finishes are applied by hand
- » All materials used meet California CARB2 requirements

ISL01-AQU (Aqua Green)

ISL01-AWH (Antique White)

ISL01-DBK (Distressed Black)

ISL01-RED (Brilliant Red)

- » Island base only
- » 52 5/8" L x 32 3/8" W x 35 1/4" H

ISL01-TOP

- » 1 3/4" hard maple edge grain butcher block
- » Food safe glues & finishing materials
- » 54" L x 34" W
- » Made in the USA



reverse side



without top



Aged Black



French White

Loft Island

This furniture style island is manufactured using the highest quality furniture grade hardwoods and MDF. The island boasts a lot of storage in a small footprint, perfect for smaller kitchens. It features two working drawers and an open cabinet with adjustable shelf on one side, a decorative panel on the reverse side, with fully adjustable shelves on both ends. The drawers are dovetailed solid hardwood and are mounted on full extension undermount soft-close slides. Cabinet features integrated soft-close hinges. Available in Aged Black or French White finish.

- » The included decorative hardware can be found in the Jeffrey Alexander Sonoma Collection (item # 431)
- » Coordinating wood posts can be found in the Hardware Resources collection (item # P34)
- » Finishes are applied by hand
- » All materials used meet California CARB2 requirements

ISL12-AGB (Aged Black)

ISL12-FWH (French White)

- » Island base only
- » 34" L x 22" W x 34 1/4" H

ISL10-TOP

- » 1 3/4" hard maple edge grain butcher block
- » Food safe glues & finishing materials
- » 36" L x 24" W
- » Made in the USA



reverse side



without top



Aged Black



French White



Aged Black



French White

Bungalow & Bungalow Petite Islands

These table style islands are manufactured using the highest quality furniture grade hardwoods and MDF and are available in two sizes. These islands feature two working drawers on one side, false drawer fronts on reverse, and an open bottom shelf. The legs can also be assembled without the shelf. The deep drawers are dovetailed solid hardwood and are mounted on full extension undermount soft-close slides. Available in Aged Black or French White finish.

- » The included decorative hardware can be found in the Jeffrey Alexander Cairo Collection (item # 595-128 and 595-96)
- » Coordinating wood posts can be found in the Hardware Resources collection (item # P34)
- » Finishes are applied by hand
- » All materials used meet California CARB2 requirements

Bungalow (large island):

ISL09-AGB (Aged Black)

ISL09-FWH (French White)

- » Island base only
- » 45 15/16" L x 28 1/16" W x 34 1/4" H

ISL03-TOP (use with ISL09)

- » 1 3/4" hard maple edge grain butcher block
- » Food safe glues & finishing materials
- » 48" L x 30" W
- » Made in the USA

Bungalow Petite (small island):

ISL10-AGB (Aged Black)

ISL10-FWH (French White)

- » Island base only
- » 33 15/16" L x 22 1/16" W x 34 1/4" H

ISL10-TOP (use with ISL10)

- » 1 3/4" hard maple edge grain butcher block
- » Food safe glues & finishing materials
- » 36" L x 24" W
- » Made in the USA



ISL09-AGB



ISL10-FWH



ISL09-FWH
assembled
without shelf



ISL10-FWH
without top



ISL10-AGB
assembled
without shelf



Antique White



Distressed Black



Antique White



Distressed Black

Round Petite & Petite Islands

These table style islands are manufactured using the highest quality furniture grade hardwoods and MDF. The Round Petite island features two working drawers and two pivot drawers. The Petite (rectangular) island features two working drawers and a decorative panel on the reverse side. The drawers are dovetailed solid hardwood and are mounted on full extension soft-close undermount slides. Available in Antique White or Distressed Black.

- » The included decorative hardware can be found in the Jeffrey Alexander Lafayette collection (item # 317-128 for pull and item # 417 for knob)
- » Finishes are applied by hand
- » All materials used meet California CARB2 requirements

Round Petite island and top:

ISL04R-AWH (Antique White)

ISL04R-DBK (Distressed Black)

- » Island base with top preinstalled
- » 36" Diameter x 36" H
- » 3" birch end grain butcher block
- » Food safe glues & finishing materials

Rectangular Petite island and top:

ISL04-AWH (Antique White)

ISL04-DBK (Distressed Black)

- » Island base with top preinstalled
- » 36" L x 24" W x 36" H
- » 3" birch end grain butcher block
- » Food safe glues & finishing materials



ISL04R-AWH



ISL04R-AWH



ISL04-DBK
reverse side



ISL04-DBK

Acanthus Island

This furniture style island is manufactured using the highest quality furniture grade hardwoods and MDF. The island features three false drawers above cabinet storage and a removable wine rack on one side and three working drawers and cabinets on the reverse side. Each cabinet contains an adjustable shelf. The drawers are dovetailed solid hardwood and are mounted on full extension soft-close undermount slides. Available in Antique White or Distressed Black.

- » The included decorative hardware can be found in the Jeffrey Alexander Regency collection (item # 1099)
- » Finishes are applied by hand
- » All materials used meet California CARB2 requirements

ISL06-AWH (Antique White)

ISL06-DBK (Distressed Black)

- » Island base only
- » 57 1/16" L x 33 15/16" W x 34 1/8" H

ISL06-TOP

- » 2 3/8" birch edge grain butcher block
- » Food safe glues & finishing materials
- » 58 3/8" L x 35" W



without top



Distressed Black



Antique White

Milanese Island

This furniture style island is manufactured using the highest quality furniture grade hardwoods and MDF. The island features three working drawers and two tall cabinets on one side and three working drawers above additional cabinet storage on the reverse side. Tall cabinets include two adjustable shelves in each cabinet. Reverse side cabinets include one adjustable shelf per cabinet. The drawers are dovetailed solid hardwood and are mounted on full extension soft-close undermount slides. Available in Antique White or Distressed Black.

- » The included decorative hardware can be found in the Jeffrey Alexander Milan collection (item # 1093 for knob and item # 1094 for pull)
- » Coordinating posts are available from Hardware Resources (item # FP1)
- » Finishes are applied by hand
- » All materials used meet California CARB2 requirements



ISL05-AWH (Antique White)

ISL05-DBK (Distressed Black)

- » Island base only
- » 63 1/8" L x 37 1/2" W x 34 1/4" H

ISL05-TOP

- » 1 3/4" hard maple edge grain butcher block
- » Food safe glues & finishing materials
- » 64" L x 38 1/2" W
- » Made in the USA



Distressed Black



without top



Antique White

Cart Island

This cart style island is manufactured using the highest quality furniture grade hardwoods and MDF. The island features two fully functional drawers and one open adjustable shelf. The drawers are mounted on full extension slides. Soft rubber swivel casters with locks included. Available in Black or White.

- » The included decorative hardware can be found in the Elements Belfast collection (item # 308-128)
- » Finishes are applied by hand
- » All materials used meet California CARB2 requirements

Island base only:

ISL501-BLK (Black)

ISL501-WH (White)

- » Island base only
- » 27" L x 17" W x 35" H

Island base and top:

ISL501-BLK-WT (Black)

ISL501-WH-WT (White)

- » Island base with top preinstalled
- » 1" thick clear-coated wood top (not food-grade)
- » 30" L x 18" W x 36" H



ISL501-BLK-WT



Black



ISL501-WH
without top



ISL501-WH-WT



White

Cart Island

This cabinet cart style island is manufactured using the highest quality furniture grade hardwoods and MDF. The island features one fully functional drawer and a large cabinet with adjustable shelf on one side, and fixed spice shelves with metal rails on both ends. The drawer is mounted on full extension slides. Cabinet doors have soft-close hinges. Soft rubber swivel casters with locks included. Available in Black or White.

- » The included decorative hardware can be found in the Elements Naples collection (item # 156 and item # 176)
- » Finishes are applied by hand
- » All materials used meet California CARB2 requirements

Island base only:

ISL500-BLK (Black)

ISL500-WH (White)

- » Island base only
- » 34" L x 18 3/4" W x 35" H

Island base and top:

ISL500-BLK-WT (Black)

ISL500-WH-WT (White)

- » Island base with top preinstalled
- » 1" thick clear-coated wood top (not food-grade)
- » 36" L x 20" W x 36" H



ISL500-BLK-WT



Black



ISL500-WH
without top



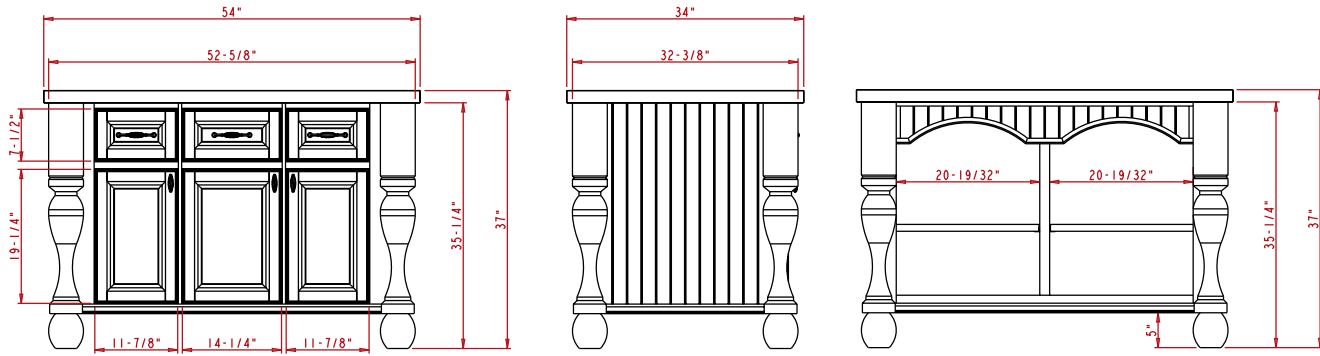
ISL500-WH-WT



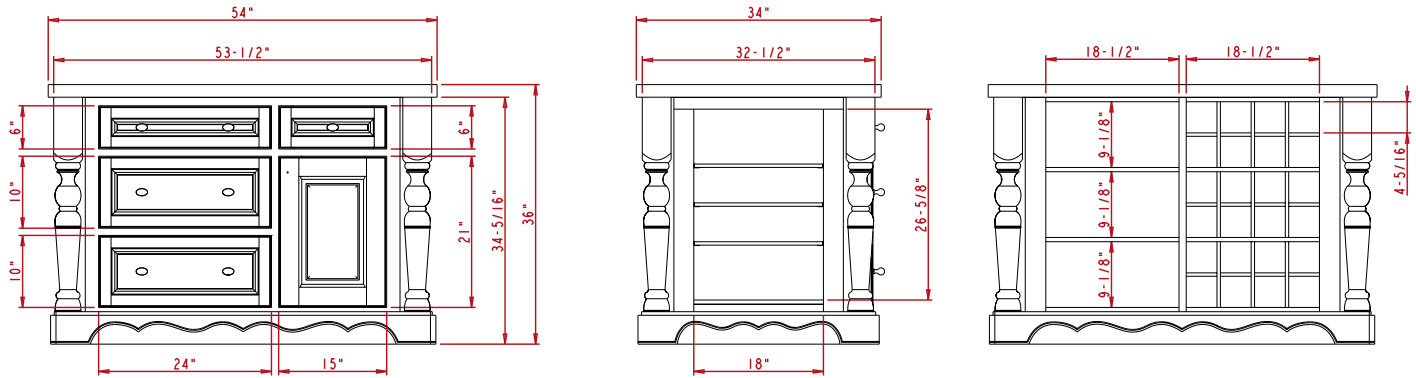
White

Island Dimensional Drawings

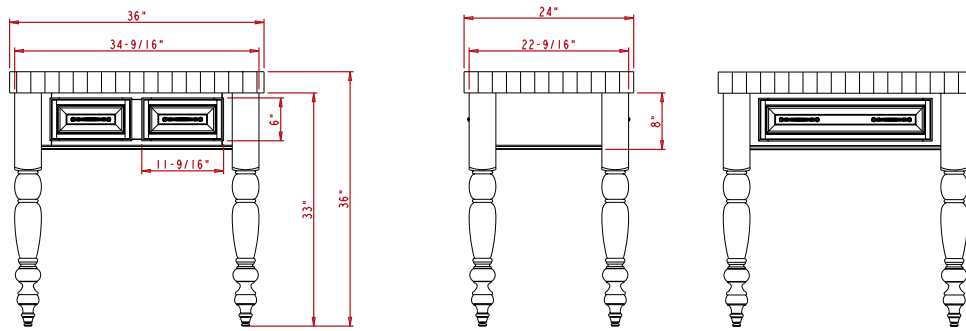
ISL01



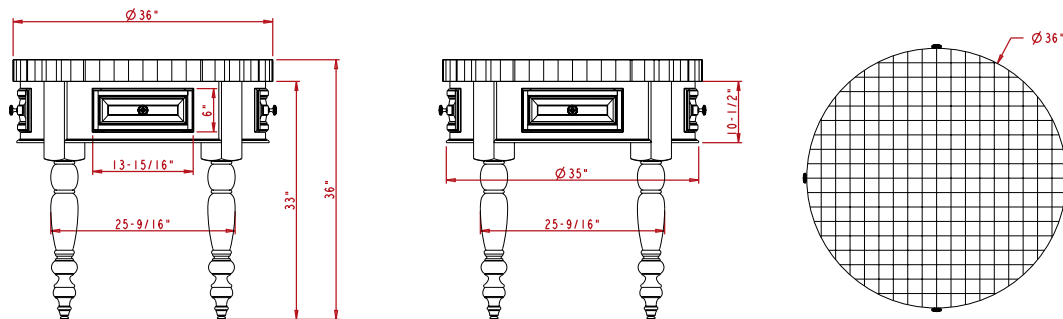
ISL02



ISL04

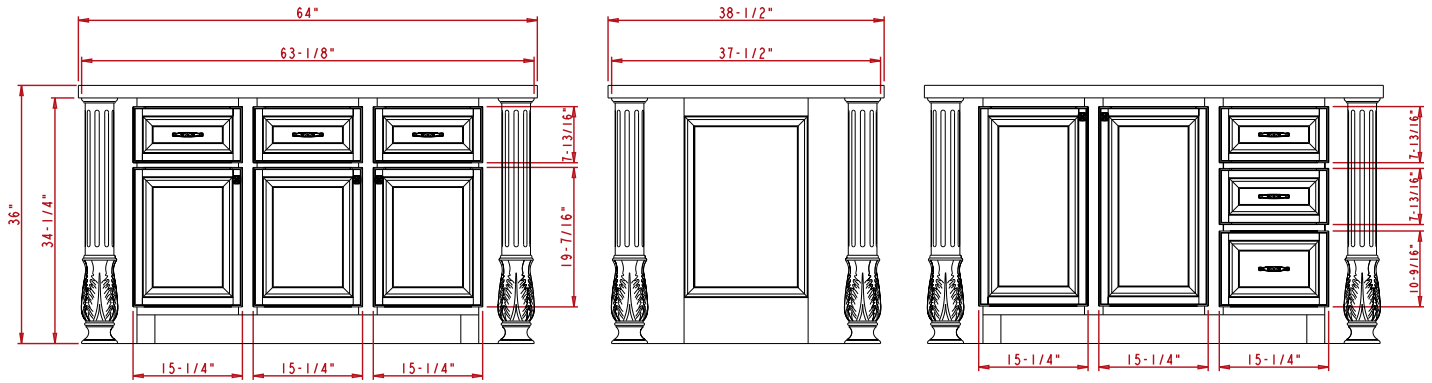


ISL04R

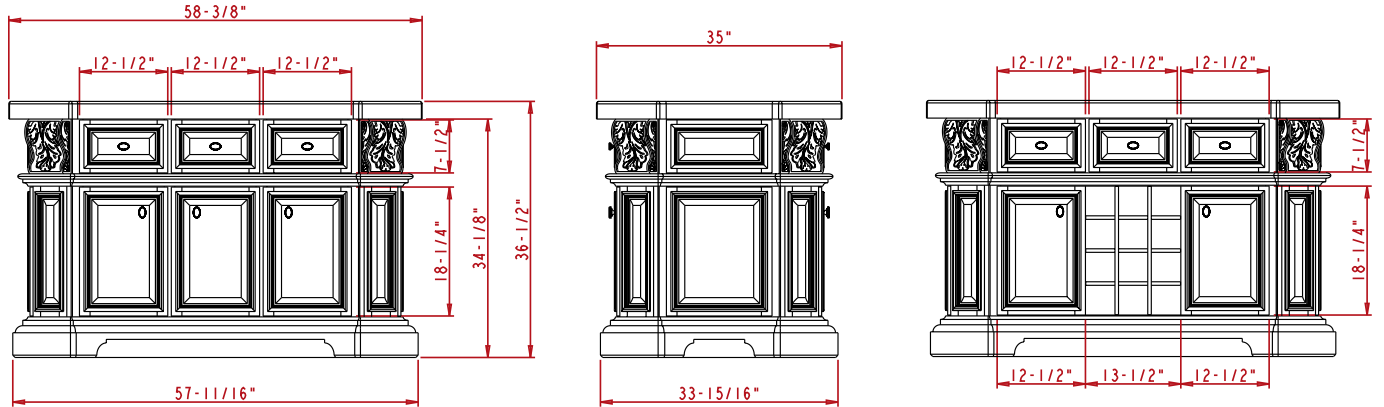


Island Dimensional Drawings

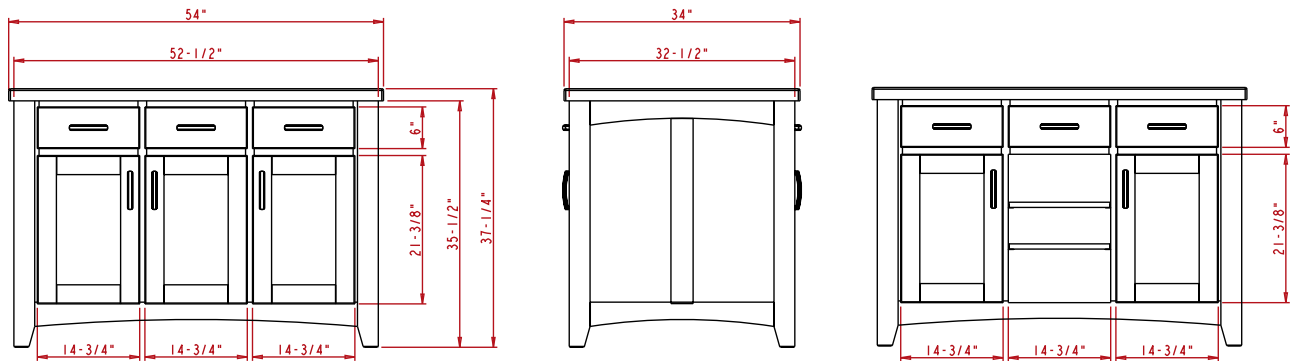
ISL05



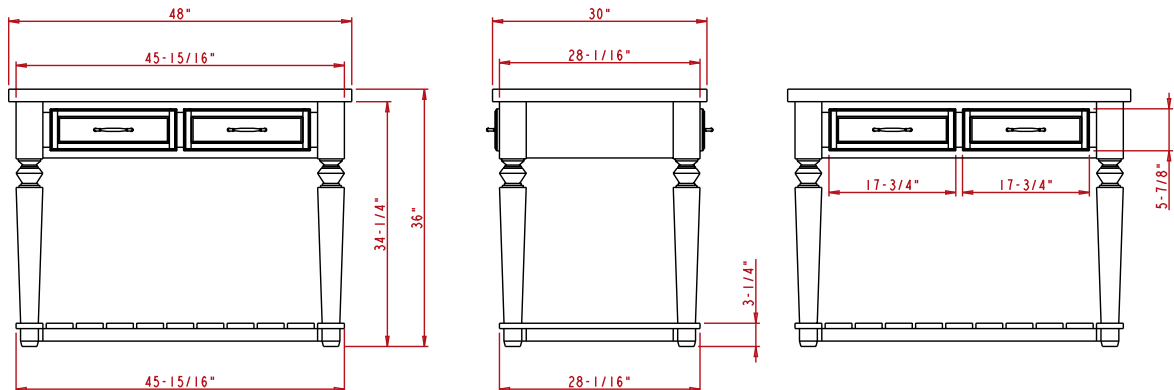
ISL06



ISL07

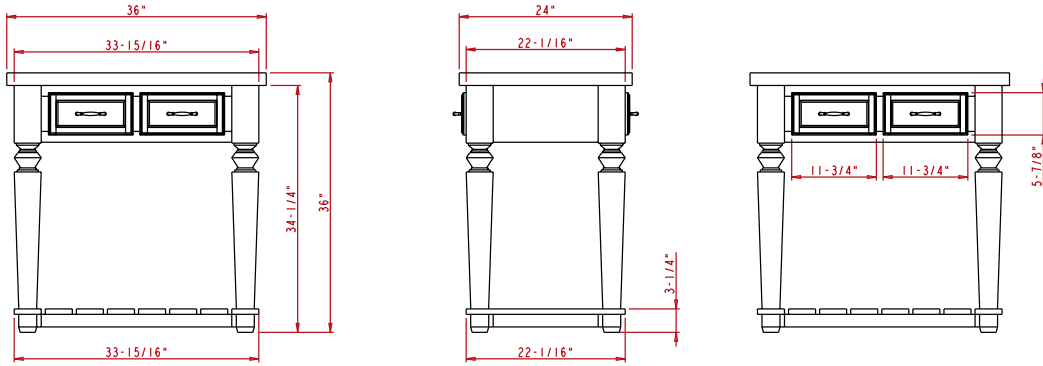


ISL09

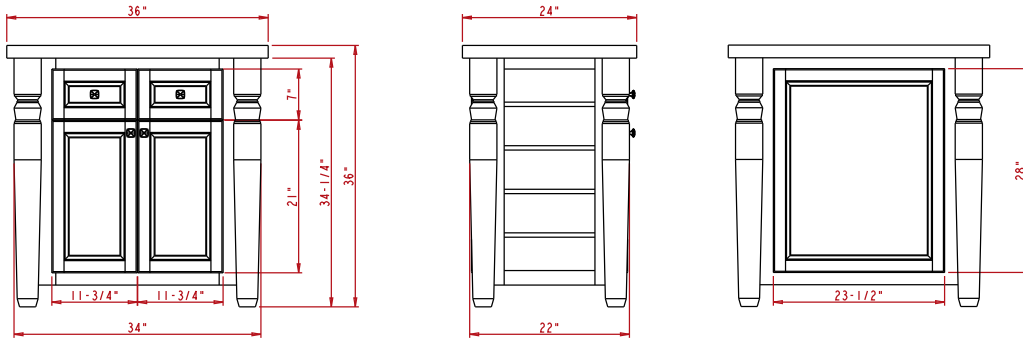


Island Dimensional Drawings

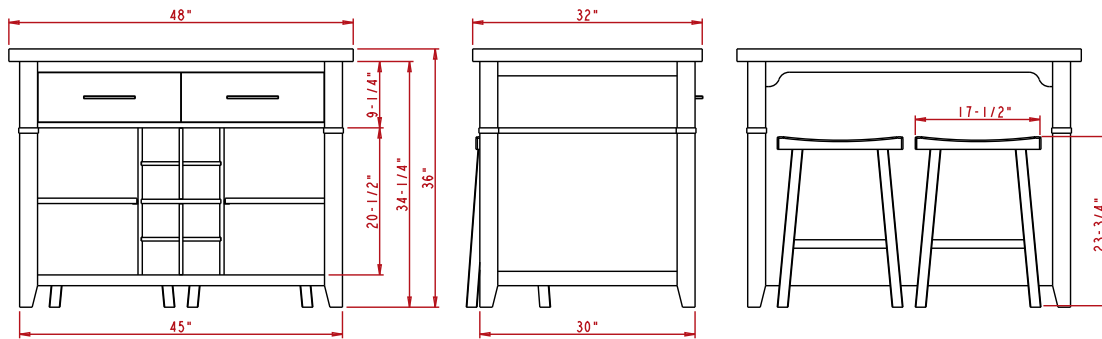
ISL10



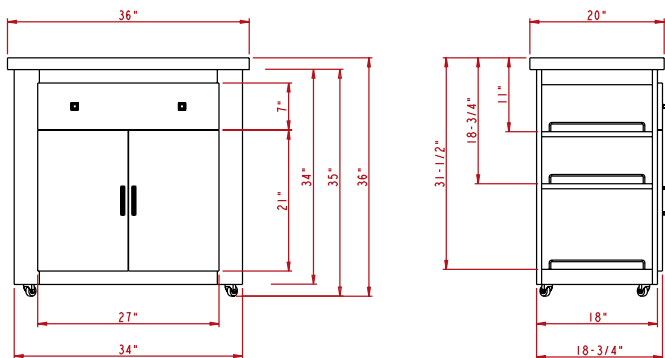
ISL12



ISL13



ISL500



ISL501

